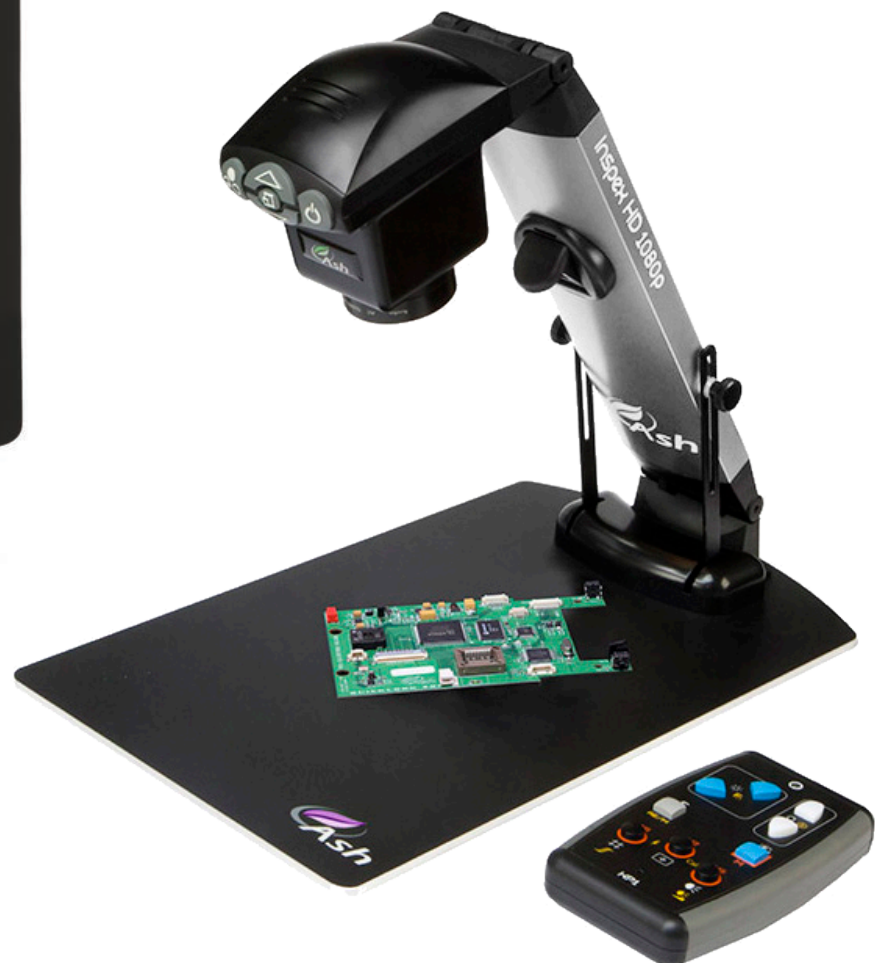
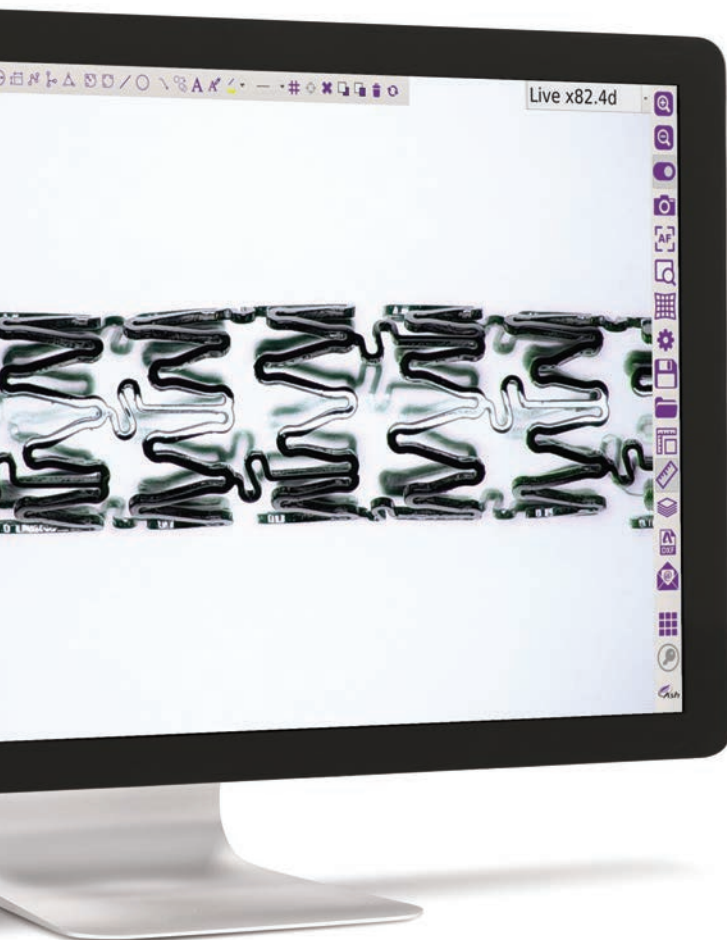


High Definition
Camera Inspection
System

INSPEX HD

1080p

ASH



Inspex HD 1080p

Digital Microscope



INSPEX HD

1080p

High Definition

Camera Inspection System

Offering superb 1080p full HD image quality, colour reproduction, contrast and resolution.

Its versatile design makes it compatible with a wide range of mounting options. Real-time on-screen dimensioning is provided by integrated XY grids and cursors.

- Full HD 1080p Image Quality
- Image Capture to USB key
- Integrated, Real-Time, On-screen Dimensioning Grids & Cursors.

Key Features:

- Accurate & detailed inspection with superb HD image resolution, dynamic range of magnification levels & integrated LED illumination.
- Real-time on-screen dimensioning provided by integrated XY grids & cursors
- Less operator fatigue & improved production efficiencies due to ergonomic design enabling user to sit or stand in a comfortable and safe posture providing relief from back, neck and eye strain typically associated with traditional microscopes.
- Easy documentation & traceability for accurate quality control records using image capture to USB key.

Applications

The Inspex HD 1080p is suited for repair & rework, quality control & failure diagnosis processes in industries such as: Automotive, aviation, electronics, engineering, forensics, jewellers, medical devices, packaging & labelling, pharmaceuticals and security.

Jonathan Higgins, Associate R&D Engineer

Ireland

Goodman Medical

"Working in the medical device industry I've come across many different inspection and measurement platforms, many of which are highly complicated and require constant maintenance and tech support to solve update and compatibility issues. Ash Technologies' Omni Core vision and measuring system is an all-in-one platform that provided a solution to all these issues.

It gives precision measurements and high resolution, high magnification images with a simple user-friendly interface with software applications that minimise error. The inspection applications not only make identifying defects an easy task, but also simplifies and speeds up operator training and measurement applications, ensuring accurate measurements every time. Software updates can be done at the click of a button with no need for IT support and additional applications can be added just as easily if required.

All in all, I would highly recommend Ash Technologies to anyone looking to simplify and improve their vision and measurement systems. I would also like to add that they have impeccable customer service which is always a plus."

Michael Mulvi, Quality Specialist

Ireland

Conductix Wampfler

The Omni vision system we purchased from Ash Technologies has given us the ability to measure dimensions on our plastic moulded parts that we previously did not have the capability to do. In sourcing this, capability has greatly improved our ability to obtain timely approval from our customers for the new products we are constantly adding to our range.

The Image Stacking function on the Omni vision system is a feature that we have found useful. We use many bought-in high precision components on our assembly line. The Image Stacking function enables us to quickly produce high magnification photographs to highlight to our suppliers any quality issues or areas for improvement. Our suppliers greatly appreciate the precision measurement and quality of the images we can now provide them with.

Roland Rucker, Quality Engineer Optoelectronics

Germany

Heraeus Noblelight GmbH

"Our goal was to acquire a microscope with the smallest possible surface differences between 5 and 500 microns without fatigue. Likewise, we wanted to create sharp images with the abnormalities and these surveying. The implementation of these requirements has now been confirmed in practice by our employees. What also stands out is the intuitive user interface our employees were able to use within a very short time. The support from their side for commissioning and technical questions is also to be positively emphasized. We can highly recommend this microscope because of our positive experiences and you as a partner."



Heraeus



INSPEX vesa



INSPEX table

Included System Components



LENSES

+5 Lens



OTHERS

Memory Stick, HDMI Cable



LENSES

+4 Lens



OTHERS

Memory Stick, HDMI Cable

Optional System Components



LENSES

+3 Lens

AI 280-129

+4 Lens

AI 280-125

+5 Lens

AI 280-123

+10 Lens

AI 280-124

Lens Polarizing Filter

AI 280-145

Lens Protector

AI 100-061



LIGHTS

8-Point LED Ring Light

AI 100-012

Polarizer for 8-Point LED Ring Light

AI 100-000

Diffused LED Dome Light

AI 100-001

LED Fibre Optic Illuminator with Dual Gooseneck

AI 100-033

UV Ring Light

AI 100-026 220V 254nm

AI 100-005 220V 375nm

AI 100-035 110V 254nm

AI 100-034 110V 375nm



CONTROLLERS

KP1 External Keypad

AI 801-414

Required to activate dimensioning grids

Footswitch

AI 801-415



OTHERS

Ash PC Capture

AI 100-052

24" Monitor

AI 801-416

Hard Case

AI 801-561

Soft Case

AI 801-566



STANDS & STAGES

XY Stage

AI 100-010

Track Stand Vesa Flex Cam

AI 100-028

Track Stand Vesa & Vesa Short Flex Cam

AI 100-019

Track Stand Vesa Short

AI 100-020

XY Stage for Uplight

AI 100-011

Uplight Track Stand Vesa & Vesa Short Flex Cam

AI 100-023

Oblique Tilting Stage

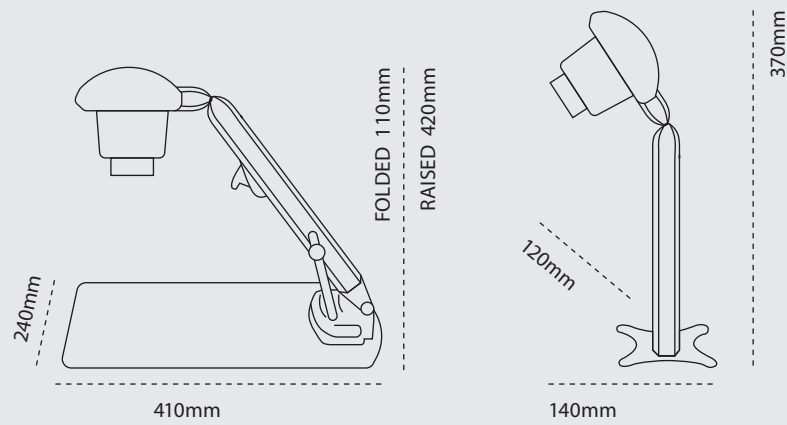
AI 801-414

Height Adjustable Stage

AI 801-413

XY Stage Large

AI 100-057



INSPEX HD

Camera
Inspection System

Magnification

INSPEX HD 1080P

	2	3	4	5	10
Lens (Dioptre) (mm)	2	3	4	5	10
Max Height (mm)	500	333	250	200	100
Min Height	405	280	205	170	85
Minimum Magnification*	1.1	1.3	2	2.5	4
Maximum Magnification* Optical/ Digital	29/57	36/71	50/98	62/122	121/237
Field of view at minimum mag. (mm)	X: 595 Y: 334	X: 400 Y: 225	X: 280 Y: 164	X: 231 Y: 136	X: 60 Y: 50
Field of view at maximum mag. (mm)	X: 20/10 Y: 11/5.5	X: 14/7 Y: 8/4	X: 10/5 Y: 6/3	X: 8/4 Y: 5/2	X: 5/2 Y: 3/1
Maximum depth of field	176	120	106	78	57
Minimum depth of field	5	4	1	.50	.20

Technical Specifications

	Vesa	Table
Zoom Range (with supplied Lens)	5D Lens – 2.5x - 122x	4D lens – 2x - 98x
Camera Resolution	HD 1080p, 1920 x 1080 at 50/60 Hz	HD 1080p, 1920 x 1080 at 50/60 Hz
Monitor Connections	HDMI / DVI	HDMI / DVI
Monitor Requirements	HD Ready / Full HD (Recommended)	HD Ready / Full HD (Recommended)
Power	8 Watts	8 Watts
Dimensions	370mm x 120mm x 140mm	Table 240mm x 410mm Folded Height 110mm, Raised Height 420mm
Weight	1.2kg	2.5kg
Operating Temperature	Storage -10°C to +60°C Operating +5°C to +40°C	Storage -10°C to +60°C Operating +5°C to +40°C
Image capture	USB 2.0 highspeed	USB 2.0 highspeed

At Ash we design, develop and manufacture all our user centric solutions in-house and are proud of our award winning innovation process. We use creative Design Thinking to actively empathise with our customers to understand their real unmet needs and jobs to be done. We seek meaningful engagement and co-creation with our end users so we can develop the best possible solutions and services in the quality assurance industry resulting in cost savings, increased workflow efficiency, waste reduction and an overall improved quality process.

Contact Us.

Ash Technologies Ltd.
B5, M7 Business Park,
Naas, Co. Kildare,
W91 P684, Ireland.

P: + 353-45-882212
E: info@ashvision.com
W: www.ashvision.com



reddot award
product design
winner 2017

